

IBM WebSphere Portal Express 6.1.5 My First Look

Dave Hay
Portal Architect
IBM Software Services for Lotus
+44 7802 918423
david_hay@uk.ibm.com

IBM WebSphere Portal Express for Linux x86, V6.1.5 Multilingual eAssembly (CR9UKML)

IL-Setup IBM WebSphere Portal Express V6.1.5 - IBM WebSphere Portal Express Install V6.1.5 (W-Setup, I-Setup, IL-Setup) Multiplatform Multilingual (CZ8G8ML)

IL-1 WebSphere Portal Express V6.1 - DB2 UDB Express Edition for Linux on x86, 32-bit (IL-2) Multilingual (C1HA2ML)

IL-2 IBM WebSphere Portal V6.1.5, WebSphere Portal Express V6.1.5 and Lotus Web Content Management V6.1.5 - WebSphere Application Server Network Deployment for Linux on x86-32, V6.1.0.27 (IL-1) Multilingual (CZ8H5ML)

IL-3 IBM WebSphere Portal Express V6.1.5 - Portal Server Express component V6.1.5 (Disk 1 of 3) (W-3, I-3, IL-3) Multiplatform Multilingual (CZ8I8ML)

IL-4 IBM WebSphere Portal Express V6.1.5 - Portal Server Express component V6.1.5 (Disk 2 of 3) (W-4, I-4, IL-4) Multiplatform Multilingual (CZ8I9ML)

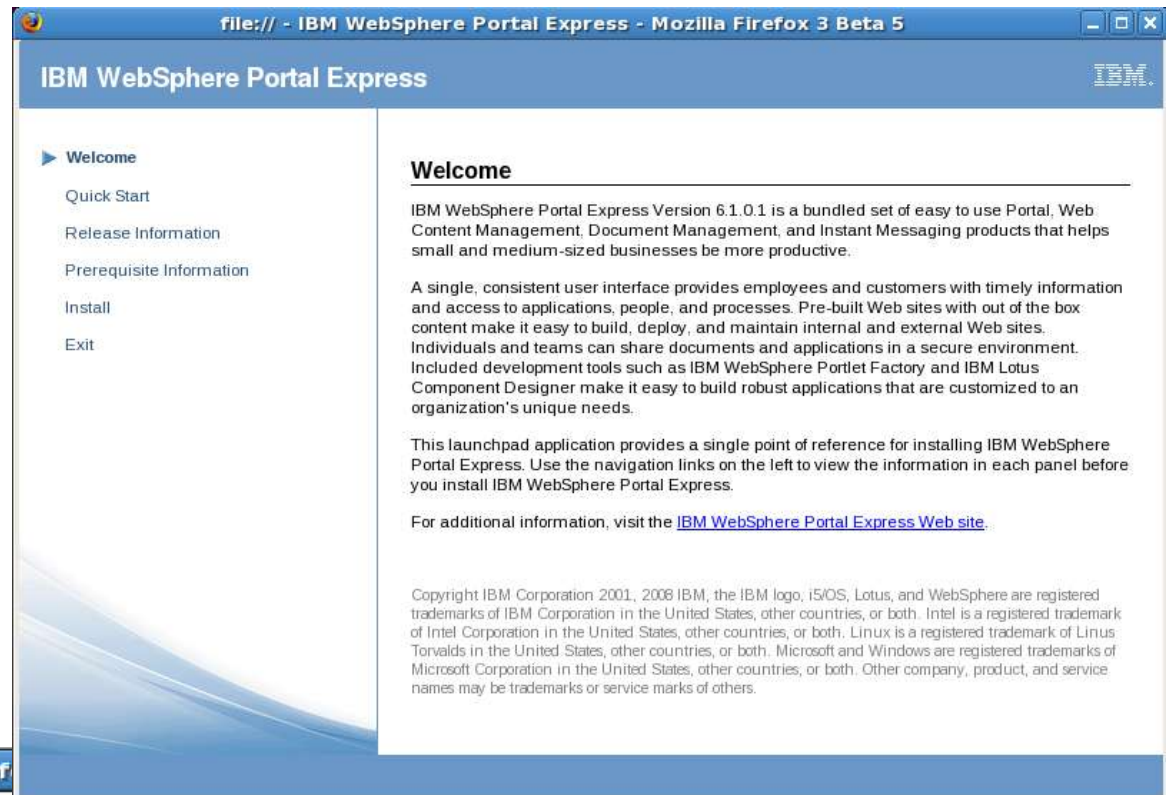
IL-5 IBM WebSphere Portal Express V6.1.5 - Portal Server Express component V6.1.5 (Disk 3 of 3) (W-5, I-5, IL-5) Multiplatform Multilingual (CZ8IAML)

```
unzip CZ8G8ML.zip      -d IL-Setup
mkdir                  IL-1
tar xvzf CZ8H5ML.tgz  -C IL-1
unzip C1HA2ML.zip     -d IL-2
unzip CZ8I8ML.zip     -d IL-3
unzip CZ8I9ML.zip     -d IL-4
unzip CZ8IAML.zip     -d IL-5
```

Download, and unpack, the product

```
root@enterprise:/mnt/hgfs/WPX615/IL-Setup
File Edit View Terminal Tabs Help
[root@enterprise IL-Setup]# ls
autorun.inf          launchpad            sametime             third_party.txt
ContentUsers.ldif    PortalExpress        setup.exe            uninstallresponse.txt
depcheck             PortalUsers.ldif    setup.ini            version.txt
dist                 quickstart           setup.sh             WASDefaultPortsFile.props
installresponse.txt  regtool              spellchecker         WPDefaultPortsFile.props
[root@enterprise IL-Setup]# ./setup.sh
```

Having unpacked the product,
start the installation ...



Choose the language, and read through the release information, prerequisites etc. ...



IBM WebSphere Portal Express



Welcome

Quick Start

Release Information

Prerequisite Information

▶ **Install**

Exit

Install IBM WebSphere Portal Express

The installation program installs all the software required to get IBM WebSphere Portal Express up and running.

IBM WebSphere Portal Express provides the base component of your portal environment. If you are only interested in basic functionality, you can start working with IBM WebSphere Portal Express immediately. If you require additional functionality, such as LDAP-based authentication or collaboration, you can add these components to expand your environment as you need them, whenever you want.

Start installation



[Launch the installation wizard for Linux.](#)

Starts the IBM WebSphere Portal Express installation program for the Linux platform.

If you encounter problems starting the installation wizard, refer to the messages displayed in the command shell window where you started the launchpad.

Choose to run the installation wizard



Welcome to IBM WebSphere Portal Feature Pack 6.1.5. The wizard will install WebSphere Portal Express Version 6.1.0.3 with Feature Pack 6.1.5 onto your computer.

To continue, click Next.

Licensed Materials – Property of IBM

5724-E77

Copyright IBM Corp. 2001, 2009

and click 'Next'
when ready ...



Software License Agreement

Please read the following license agreement carefully.

International Program License Agreement

Part 1 - General Terms

BY DOWNLOADING, INSTALLING, COPYING, ACCESSING, CLICKING ON AN "ACCEPT" BUTTON, OR OTHERWISE USING THE PROGRAM, LICENSEE AGREES TO THE TERMS OF THIS AGREEMENT. IF YOU ARE ACCEPTING THESE TERMS ON BEHALF OF LICENSEE, YOU REPRESENT AND WARRANT THAT YOU HAVE FULL AUTHORITY TO BIND LICENSEE TO THESE TERMS. IF YOU DO NOT AGREE TO THESE TERMS,

- DO NOT DOWNLOAD, INSTALL, COPY, ACCESS, CLICK ON AN "ACCEPT" BUTTON, OR USE THE PROGRAM; AND

- PROMPTLY RETURN THE UNUSED MEDIA, DOCUMENTATION, AND PROOF OF ENTITLEMENT TO THE PARTY FROM WHOM IT WAS OBTAINED FOR A REFUND OF THE AMOUNT PAID. IF THE PROGRAM WAS DOWNLOADED, DESTROY ALL COPIES OF THE PROGRAM.

1. Definitions

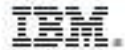
Read Non-IBM Terms

I accept both the IBM and the non-IBM terms

I do not accept the terms in the license agreement

Print

Read, and accept, the license agreement



WebSphere Portal Express will be installed in the following directory.

To install to a different directory, click Browse. Do not select a directory that includes any of the following characters: ~!@#\$\$%^&*()_+{|<>?`=[];',."

Space Required: 4518 MB

Keep the installation path as short as possible to prevent error messages in the wpinstallog.txt file.

WebSphere Portal Express installation directory:

/opt/IBM/WebSphere/PortalExpress

Browse

I chose the default installation path (default for Unix, that is)



Enter the properties for this profile of the WebSphere Application Server.

Enter the unique name for this installation of WebSphere Portal Server Express. This name is used as the node name to identify the server. No duplicate node names can exist in a cell.

The node name can contain alphabetic characters (A-Z, a-z), numbers (0-9), periods (.), dashes (-) and underscores (_) only, and it must not begin or end with a period or a dash.

Specify the fully-qualified host name or the IP address for this computer. If specifying the host name, be sure to include the fully-qualified domain name (for example, hostname.example.com). Do not use local host or a loopback address.

The host name can contain alphabetic characters (A-Z, a-z), numbers (0-9), periods (.) and dashes (-) only.

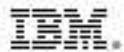
Node name:

enterprise

Host name:

enterprise.uk.ibm.com

Choose the nodename and fully qualified hostname ... on Windows, I seem to recall that the node name needed to be 5 characters to avoid +255 character path problems



Enter the administrative user ID and password.

This user ID is used to access WebSphere Portal Express and WebSphere Application Server. The user ID [wpdb2ins] is predefined for database installation and will be created as a user ID on the local operating system, along with the password specified here. Be sure to choose a password that meets your organizational requirements.

User ID:

Password:

Confirm password:

I chose wpsadmin, rather than the default wpadmin, and entered a password – note the wpdb2ins user shares the password

WebSphere Portal Express Feature Pack 6.1.5 Installer



Enter the administrative user ID and password.

This user ID is used to access WebSphere Portal Express and WebSphere Application Server. The user ID [wpdb2ins] is predefined for database installation and will be created as a user ID on the local operating system, along with the password specified here. Be sure to choose a password that meets your organizational requirements.

User ID:

wpsadmin

Password:

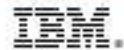
WebSphere Portal Express Feature Pack 6.1.0.1 Installer



The specified values meet WebSphere Portal requirements. However, because a local ID will be created on the operating system, be sure that the user name and password also conform to your organization's policies, including minimum password length and complexity. Failure to conform to these policies can result in Portal Express install failure.

OK

To further reiterate,wpdb2ins is a REAL OS user so password policies etc. apply



WebSphere Portal Express is ready to install.

If you want to review or change any settings, click Back. If you are satisfied with the settings click Next to begin copying files. Note that the install will take a while to complete.

Products to install:

* WebSphere Application Server ND 6.1.0.27 981MB

/opt/IBM/WebSphere/PortalExpress/AppServer

* WebSphere Application Server Profile Selection 773 MB

/opt/IBM/WebSphere/PortalExpress/AppServer/profiles/wp_profile

* WebSphere Portal Express 6.1.0.3 with Feature Pack 6.1.5 1591MB

/opt/IBM/WebSphere/PortalExpress/PortalServer

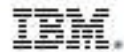
* DB2 Express 9.1 (Fix Pack 4) 488MB

/opt/IBM/WebSphere/PortalExpress/db2

This user ID is used to access DB2.

wpdb2ins

In summary ...



Installation was successful.

WebSphere Portal Express with Feature Pack 6.1.5 is now installed on your computer. Installation and configuration details can be found in `/opt/IBM/WebSphere/PortalExpress/PortalServer/log`.

First Steps gives you access to launch WebSphere Portal Express and view product documentation.

Launch First Steps

WebSphere Portal Express is listening on port 10040.

The WebSphere Portal Express page is now available at `http://localhost:10040/wps/portal`.

The following products are now installed in the indicated locations:

WebSphere Application Server ND 6.1.0.27 981MB

`/opt/IBM/WebSphere/PortalExpress/AppServer`

WebSphere Application Server Profile Selection

`/opt/IBM/WebSphere/PortalExpress/AppServer/profiles/wp_profile`

WebSphere Portal Express 6.1.0.3 with Feature Pack 6.1.5 1591MB

`/opt/IBM/WebSphere/PortalExpress/PortalServer`

DB2 Express 9.1 (Fix Pack 4) 488MB

`/opt/IBM/WebSphere/PortalExpress/db2`

This user ID is used to access DB2.

`wpdb2ins`

On my machine, this took less than an hour ...

```
root@enterprise:~
File Edit View Terminal Tabs Help
-----
IBM WebSphere Application Server Product Installation Status Report
-----
Report at date and time November 27, 2009 8:00:04 AM GMT

Installation
-----
Product Directory      /opt/IBM/WebSphere/PortalExpress/AppServer
Version Directory     /opt/IBM/WebSphere/PortalExpress/AppServer
ersion
DTD Directory         /opt/IBM/WebSphere/PortalExpress/AppServer
ersion/dtd
Log Directory         /opt/IBM/WebSphere/PortalExpress/AppServer
Backup Directory     /opt/IBM/WebSphere/PortalExpress/AppServer
ersion/nif/backup
TMP Directory         /tmp

Product List
-----
ND                    installed

Installed Product
-----
Name                  IBM WebSphere Application Server - ND
Version               6.1.0.27
ID                    ND
Build Level           cf270934.08
Build Date            8/25/09

-----
End Installation Status Report
-----
[root@enterprise ~]#
```

```
root@enterprise:~
-----
Product Directory      /opt/IBM/WebSphere/PortalExpress/PortalServer
Version Directory     /opt/IBM/WebSphere/PortalExpress/PortalServer/version
DTD Directory         /opt/IBM/WebSphere/PortalExpress/PortalServer/version/dtd
Log Directory         /opt/IBM/WebSphere/PortalExpress/PortalServer/version/log
Backup Directory     /opt/IBM/WebSphere/PortalExpress/PortalServer/version/backup
TMP Directory         /tmp

Installation Platform
-----
Name                  IBM WebSphere Portal
Version               6.1

Technology List
-----
MP                    installed
WCM                   installed
FEAT615               installed

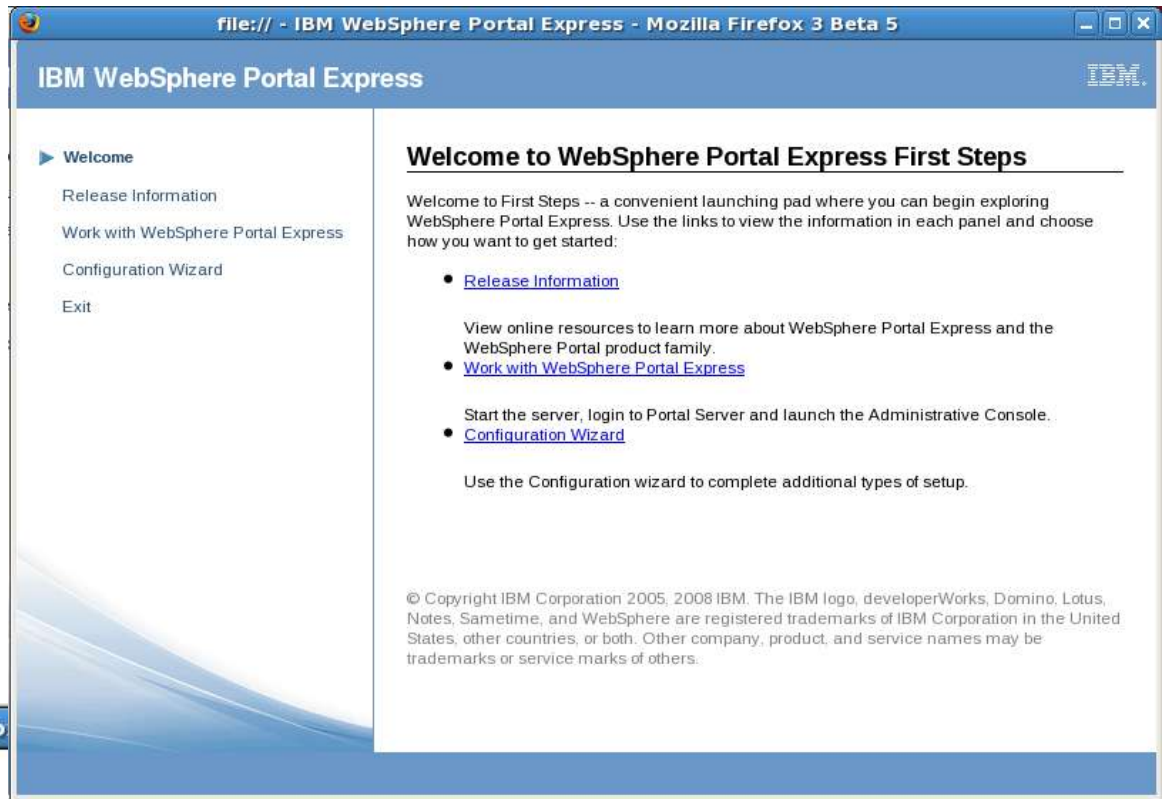
Installed Product
-----
Name                  IBM WebSphere Portal FeaturePack
Version               6.1.5.0
ID                    FEAT615
Build Level           wp6103_201_01 2009-11-07
Build Date            11/07/2009

Installed Product
-----
Name                  IBM Lotus Web Content Management
Version               6.1.0.3
ID                    WCM
Build Level           Build 19,81
Build Date            2009/11/04 at 22:10:30 EST

Installed Product
-----
Name                  IBM WebSphere Portal MultiPlatform
Version               6.1.0.3
ID                    MP
Build Level           wp6103_201_01 2009-11-07
Build Date            11/07/2009

-----
End Installation Status Report
-----
[root@enterprise ~]#
```

Post-installation, we have
WAS 6.1.0.27 and WP/WCM
6.1.0.3



After the installation completes, the First Steps wizard launches ...

IBM WebSphere Portal Express



Welcome

Release Information

► **Work with WebSphere Portal Express**

Configuration Wizard

Exit

Work with WebSphere Portal Express

After you finish installing WebSphere Portal Express, you can use the links below to get started working with the site:

- **Start Portal server**

Start the portal server that was created during installation. To check the status of the server at any time, refer to the Services control panel (Windows) or use the WebSphere Application Server serverStatus command (all platforms).

 [Start Portal Server](#)

- **Login to the Portal Server**

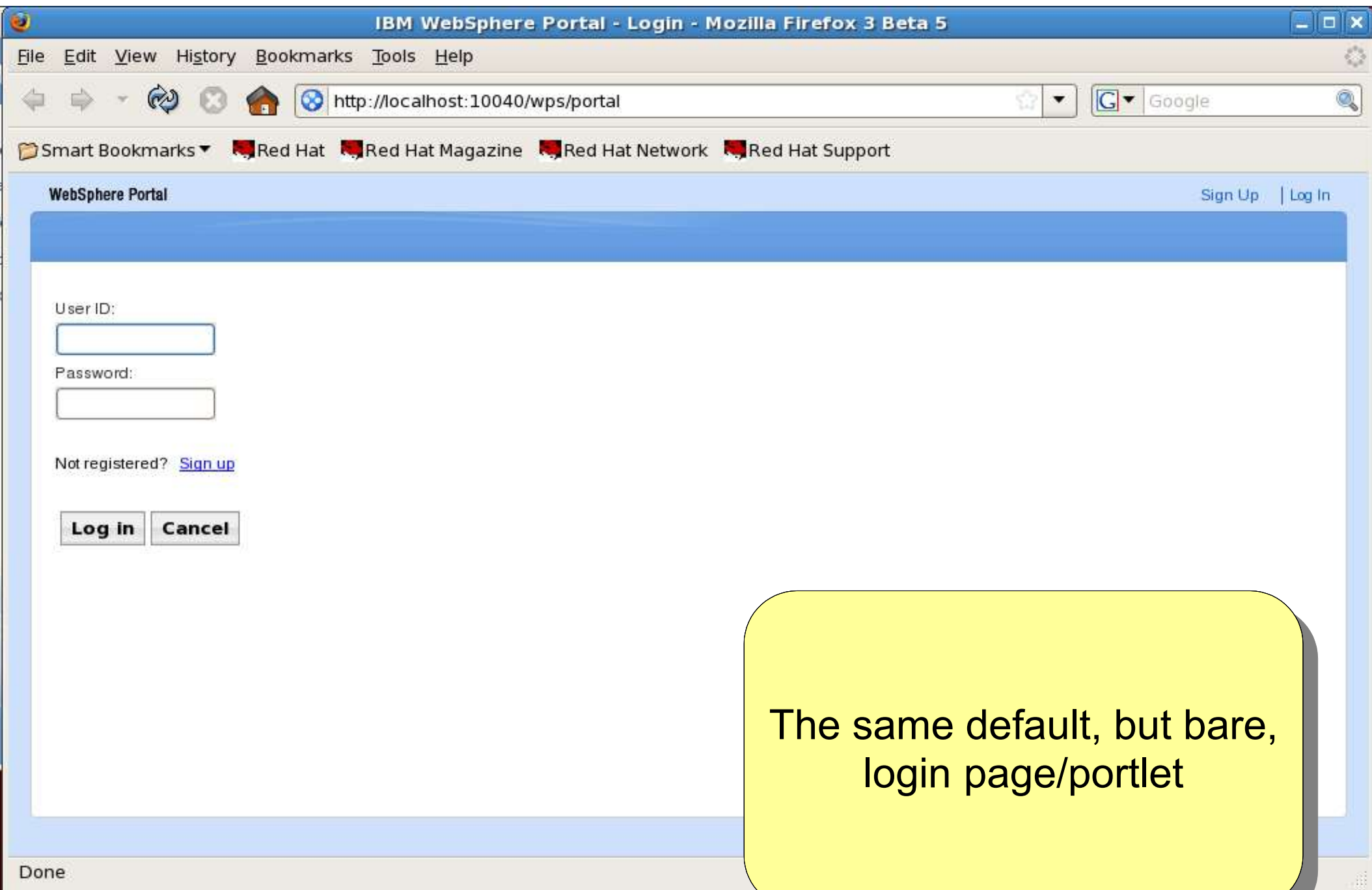
Launch the Portal Server that was created during installation. You can login with the Administrative User ID and password to explore and configure the Portal.

 [Login to Portal Server](#)

- **Launch the Administrative Console**

Use the different administrative consoles to manage the look and feel of the portal and portal settings, manage the portal content, and manage the portal users.

Note, that for me, Portal was automatically started post-installation ... which is nice



The same default, but bare,
login page/portlet

IBM WebSphere Portal - Login - Mozilla Firefox 3 Beta 5

File Edit View History Bookmarks Tools Help

http://localhost:10040/wps/portal/!ut/p/c5/04_SB8K8xLLM9MSSzPy8xBz9QJ_8! Google

Smart Bookmarks Red Hat Red Hat Magazine Red Hat Network Red Hat Support

WebSphere Portal Sign Up | Log In

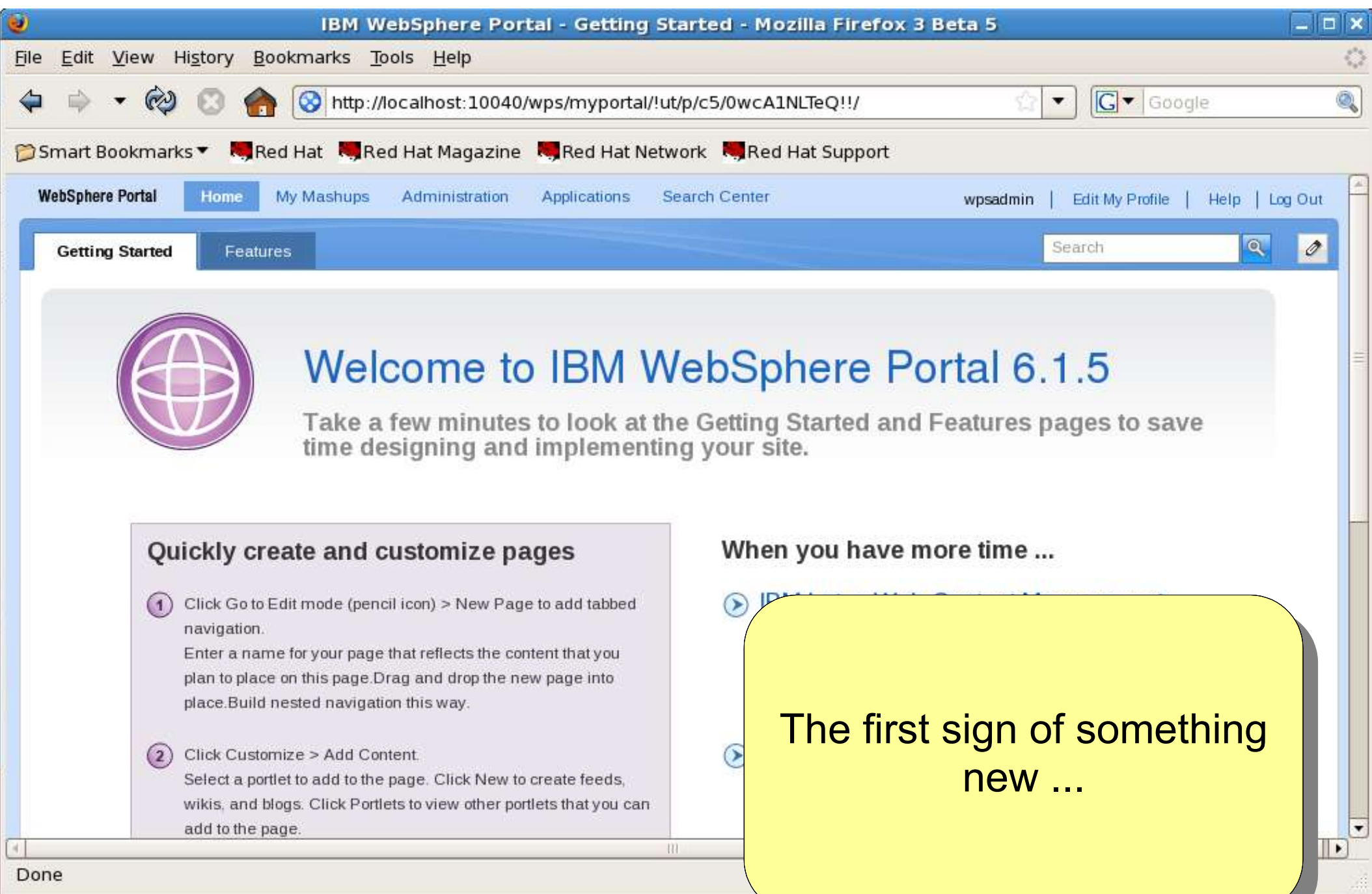
User ID:

Password:

Not registered? [Sign up](#)

Done

Start with the wpsadmin user ... as we have no LDAP in place yet



Welcome to IBM WebSphere Portal 6.1.5

Take a few minutes to look at the Getting Started and Features pages to save time designing and implementing your site.

Quickly create and customize pages

- 1 Click Go to Edit mode (pencil icon) > New Page to add tabbed navigation. Enter a name for your page that reflects the content that you plan to place on this page. Drag and drop the new page into place. Build nested navigation this way.
- 2 Click Customize > Add Content. Select a portlet to add to the page. Click New to create feeds, wikis, and blogs. Click Portlets to view other portlets that you can add to the page.

When you have more time ...

- ▶ IBM WebSphere Portal
- ▶ IBM WebSphere Portal

The first sign of something new ...



Features of IBM WebSphere Portal 6.1.5

Learn more about the new features available to you in this release.

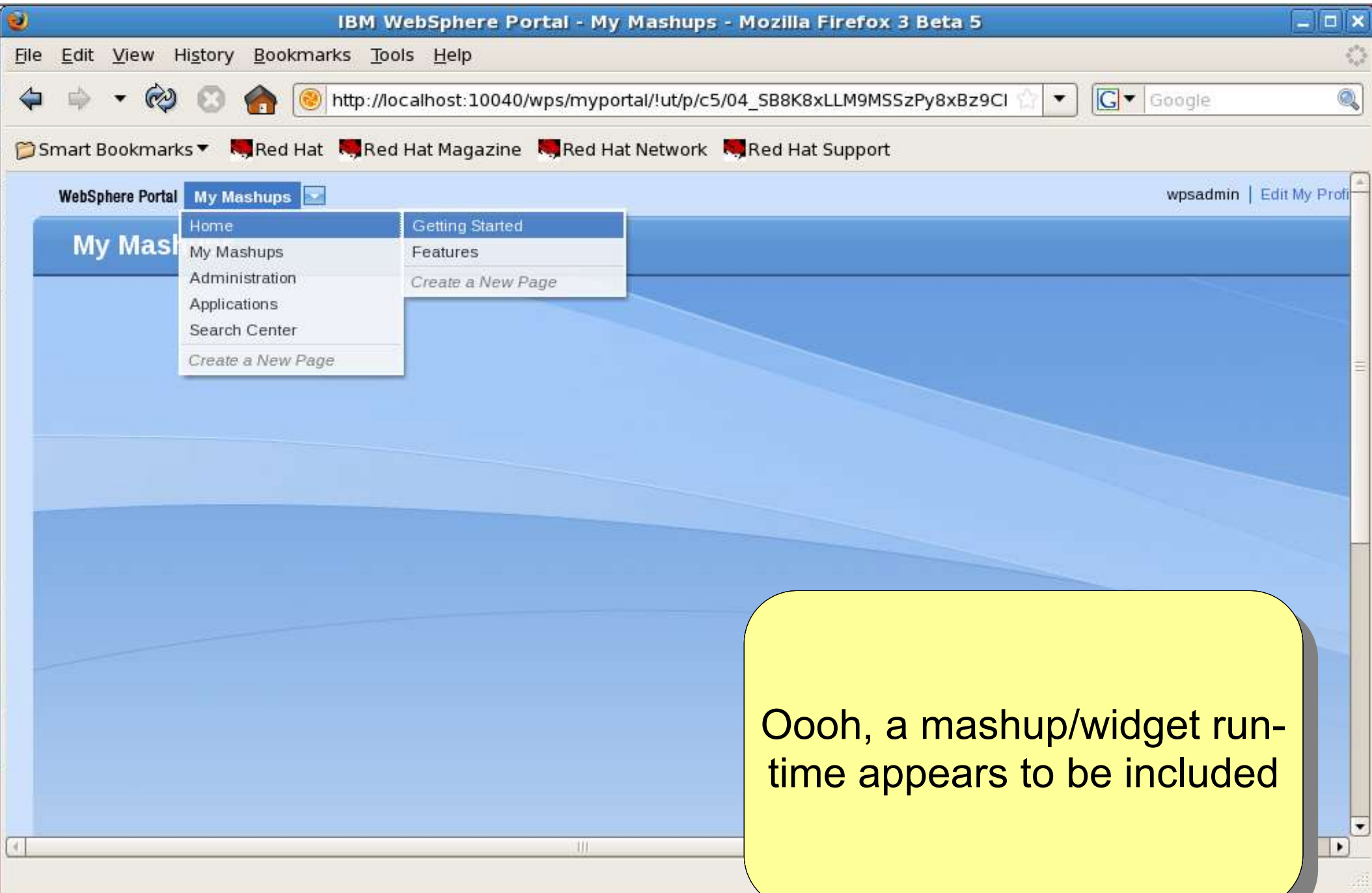
Easier page creation and customization

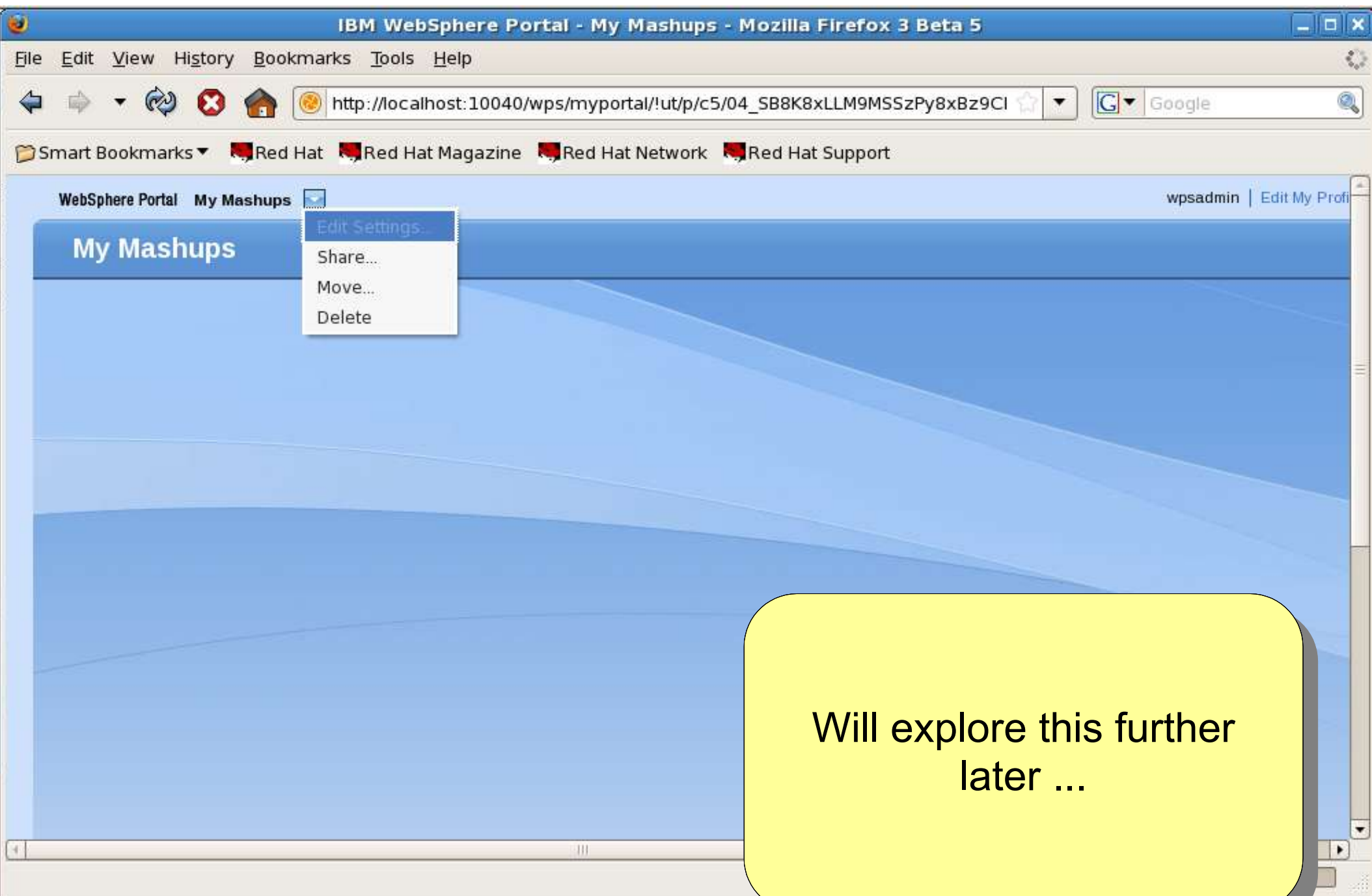
- ▶ New theme that lets you build pages with ease. You get the theme by default.
- ▶ Customize button that centralizes many page building features. Click Customize to add content and to select from a list of visual styles and layouts for your page.
- ▶ Build site navigation faster. Click New Page to quickly add pages to the navigation.
- ▶ Drag and drop pages to create layers to your navigation.

IBM Lotus Web Content Management

- ▶ New Web content libraries enable you to easily create blogs,

More to follow ...





Will explore this further
later ...

IBM WebSphere Portal - Welcome - Mozilla Firefox 3 Beta 5

File Edit View History Bookmarks Tools Help


http://localhost:10040/wps/myportal!/ut/p/c5/04_SB8K8xLLM9MSSzPy8xBz9Cl

Smart Bookmarks Red Hat Red Hat Magazine Red Hat Network Red Hat Support

WebSphere Portal Home My Mashups Administration Applications Search Center wpsadmin Edit My Profile Help Log Out

Collaboration Content Messaging Templates Search

You are in: [Collaboration](#) > Welcome



Welcome to Collaboration

View documents, access teamrooms and blogs, integrate with Lotus Notes, access Web conferences and chat with others using your Lotus Sametime contact list.

Need Help?

Go to the [IBM Information Center](#). Find complete, in-depth product information.

Try [IBM developerWorks](#). Read technical articles about IBM WebSphere Portal.

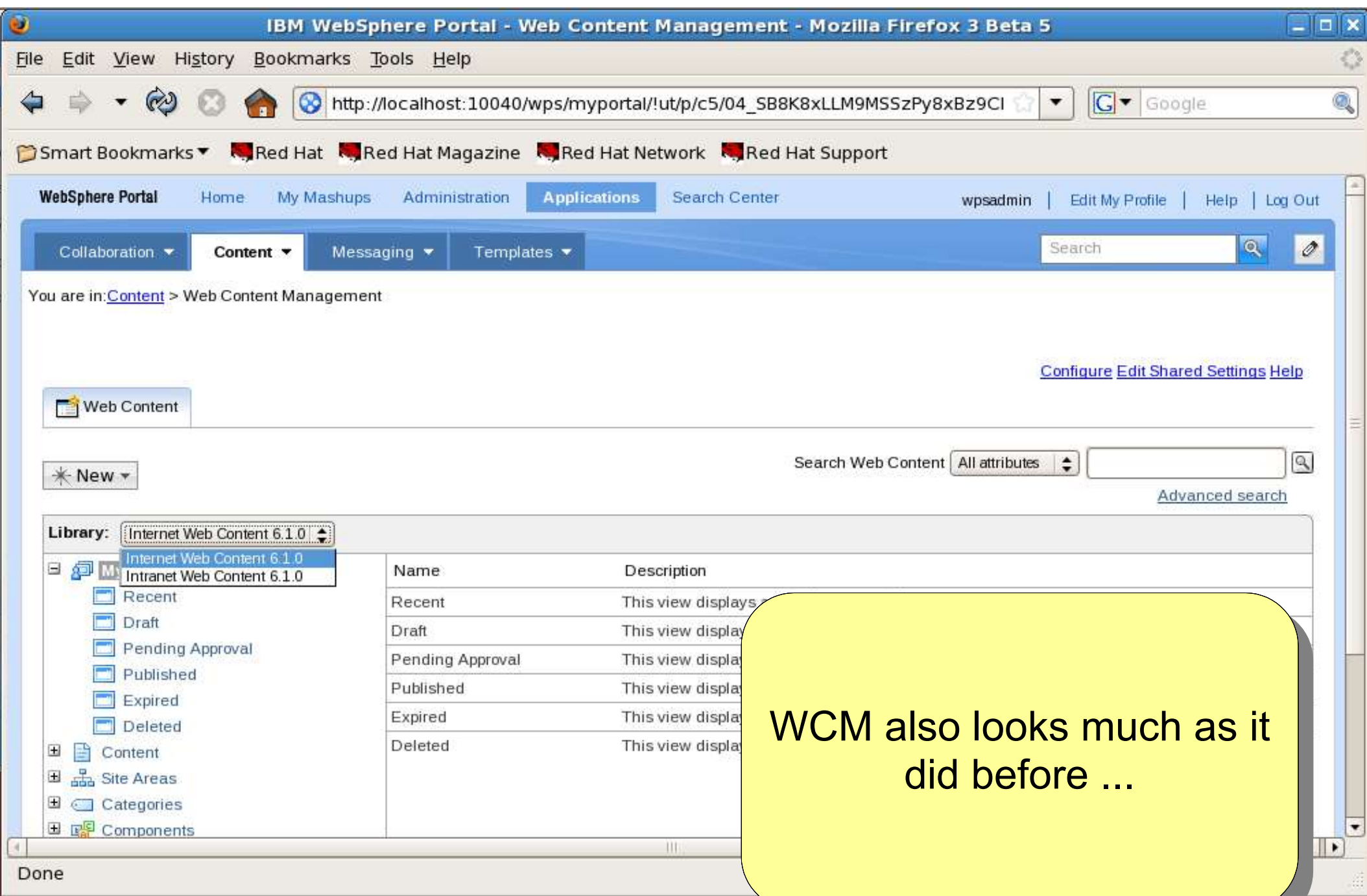
Need Support?

[IBM Software Support](#)

- ▶ **Lotus Quickr Lotus Connections**
Access Lotus Quickr services to create places to share content, organize projects, and work with your team. Extend collaboration with the social networking features of Lotus Connections including Activities, Blogs, Communities, Dogear, and Profiles. [Click here](#) for more information about integrating Lotus Quickr and Lotus Connections services with
- ▶ **Lotus Web Co**
Find, attend a meetings. Vie
- ▶ **Lotus Notes V**
Open and wo teamroom da portlet to open

Done

Looks the same as the first 6.1 release ...



WCM also looks much as it did before ...

WebSphere Portal Express - Welcome - Mozilla Firefox 3 Beta 5

File Edit View History Bookmarks Tools Help

http://localhost:10040/wps/myportal!/ut/p/c5/04_SB8K8xLLM9MSSzPy8xBz9CI

Smart Bookmarks Red Hat Red Hat Magazine Red Hat Network Red Hat Support

WebSphere Portal Express Home My Mashups Administration Applications More... wpsadmin Edit My Profile Help Log Out

Administration WebSphere Portal All Sources

Welcome

- Portal User Interface
 - Manage Pages
 - Themes and Skins
 - Theme Customizer
 - Site Management
 - Page Templates
- Portlet Management
 - Web Modules
 - Applications
 - Portlets
 - Web Services
 - Web Clipping
- Access
 - Users and Groups
 - Resource Permissions

Welcome to WebSphere Portal Administration

Manage. Create. Configure. Build and customize your site now!

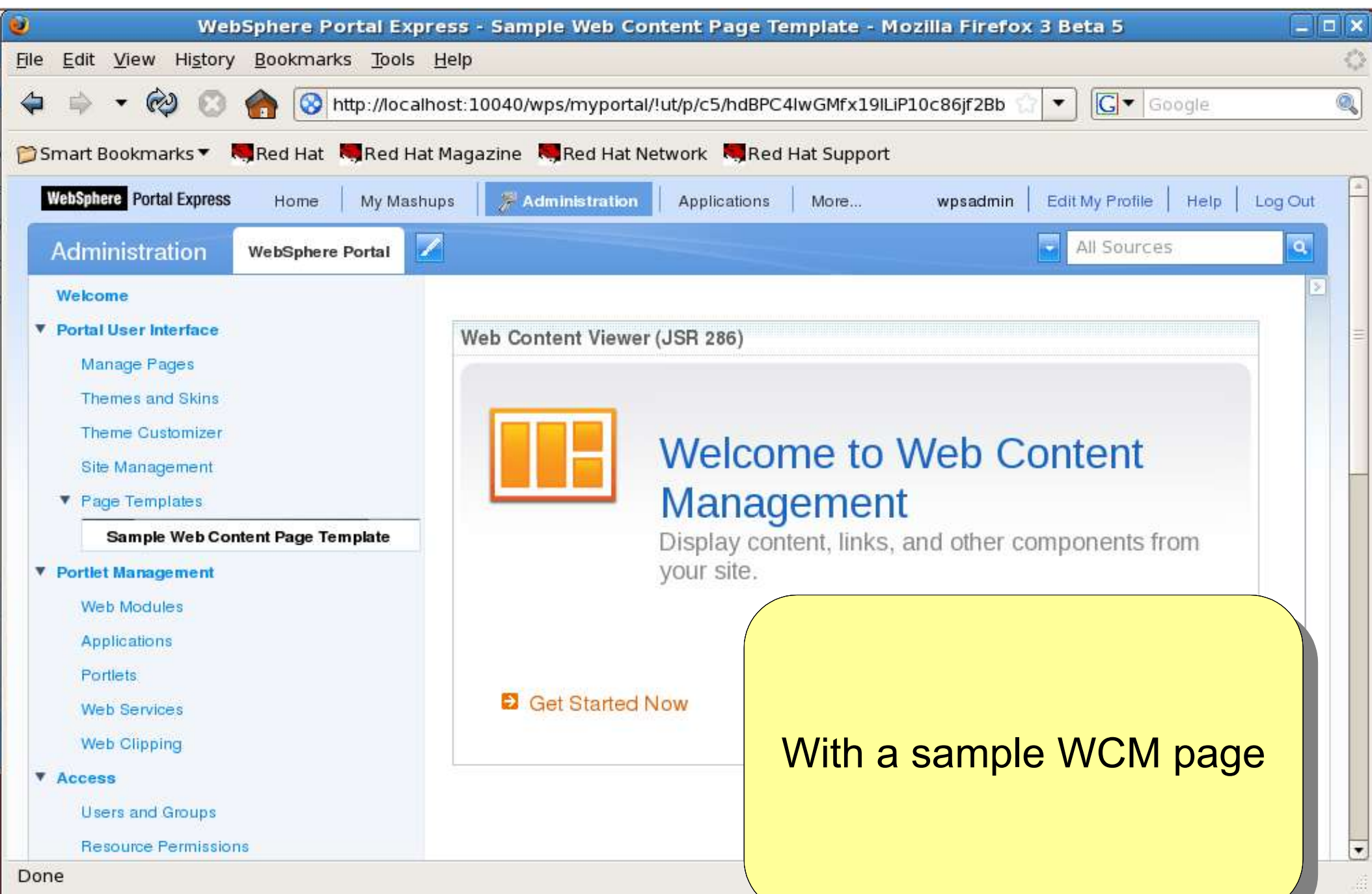
Portal User Interface
Create and manage the page hierarchy and the look and feel of the site.

Portlet Management
Manage the portlets that make up the site.

Portal Content

A new Page Templates link on the left-hand side ...

Done



With a sample WCM page

WebSphere Portal Express - Feed Configurations - Mozilla Firefox 3 Beta 5

File Edit View History Bookmarks Tools Help

http://localhost:10040/wps/myportal!/ut/p/c5/lZDLCoMwEEW_qGRi0jEufUCSqi

Smart Bookmarks Red Hat Red Hat Magazine Red Hat Network Red Hat Support

WebSphere Portal Express Home My Mashups Administration Applications More... wpsadmin Edit My Profile Help Log Out

Administration WebSphere Portal All Sources

Welcome

- Portal User Interface
 - Manage Pages
 - Themes and Skins
 - Theme Customizer
 - Site Management
- Page Templates
 - Sample Web Content Page Template
- Portlet Management
 - Web Modules
 - Applications
 - Portlets
 - Web Services
 - Web Clipping
- Access
 - Users and Groups
 - Resource Permissions

Web Content Integrator Feeds

[New](#) [Consume](#) [Delete](#)

No feeds have been configured yet. Click the **New** button to create a feed.

Done

Having heard that the WCI asset was included, here it is ...

Administration

WebSphere Portal

All Sources

Welcome

Portal User Interface

- Manage Pages
- Themes and Skins
- Theme Customizer
- Site Management

Page Templates

Sample Web Content Page Template

Portlet Management

- Web Modules
- Applications
- Portlets
- Web Services
- Web Clipping

Access

- Users and Groups
- Resource Permissions

About WebSphere Portal

IBM WebSphere Portal 6.1.0.3

Build Level: wp6103_201_01 2009-11-07 14:01

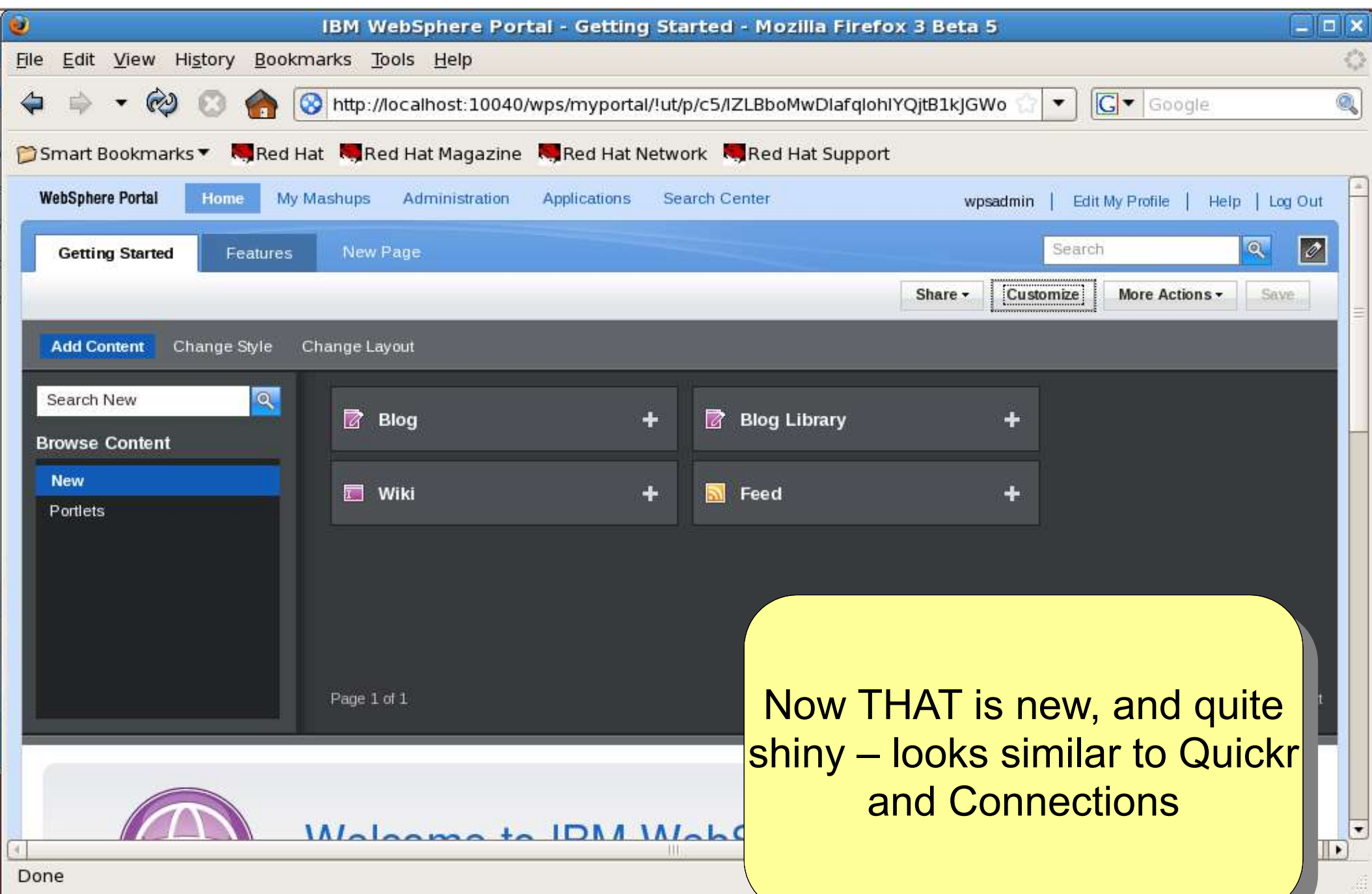
Feature Pack: IBM WebSphere Portal FeaturePack 6.1.5.0 (FEAT615 wp6103_201_01 2009-11-07)

Licensed Materials - Property of IBM

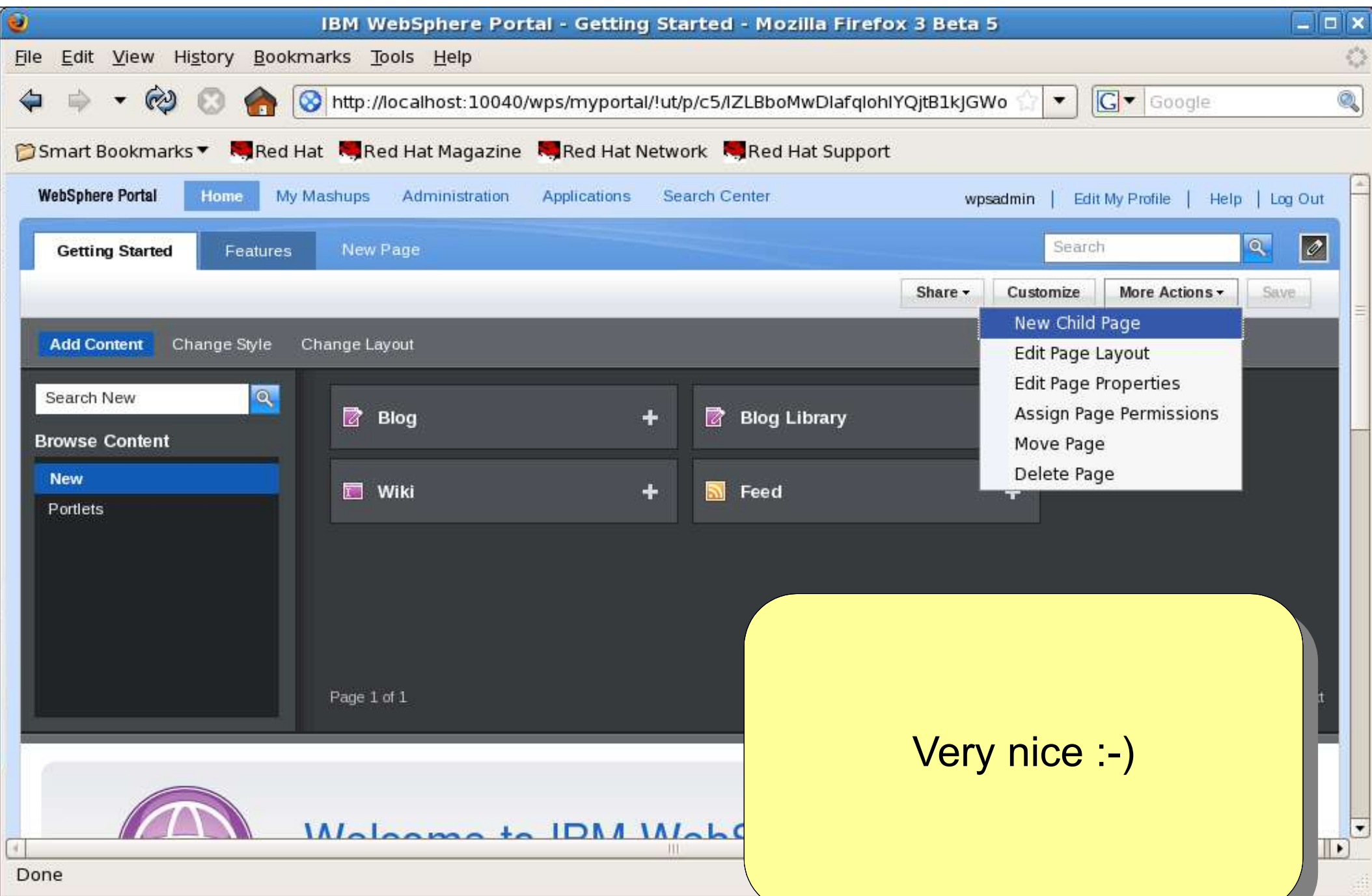
5724-E76, 5724-E77, 5655-M44

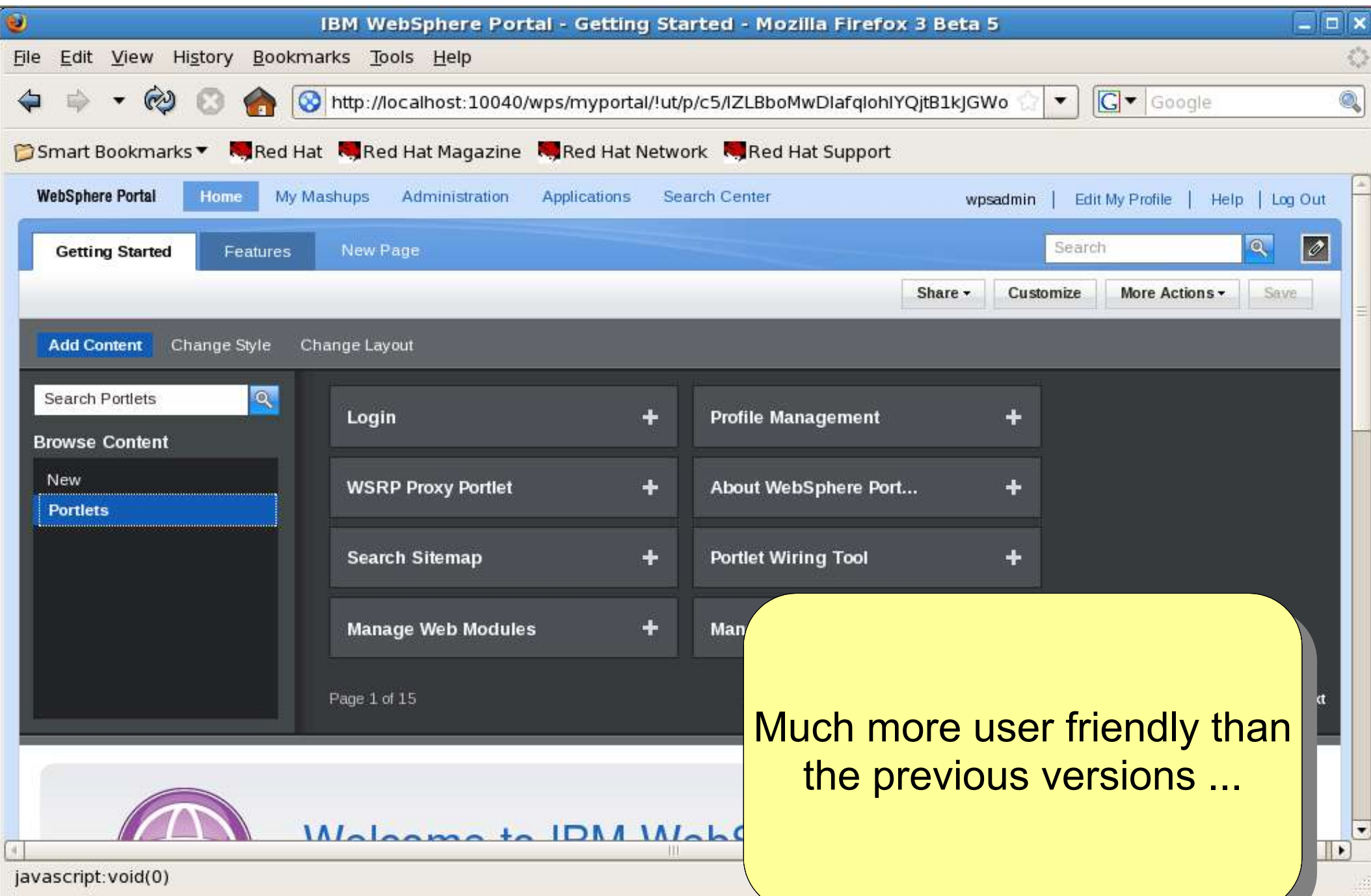
(C) Copyright IBM Corp. 2001, 2007 All Rights Reserved.

Just to confirm that this is a new release/update to 6.1.0.2

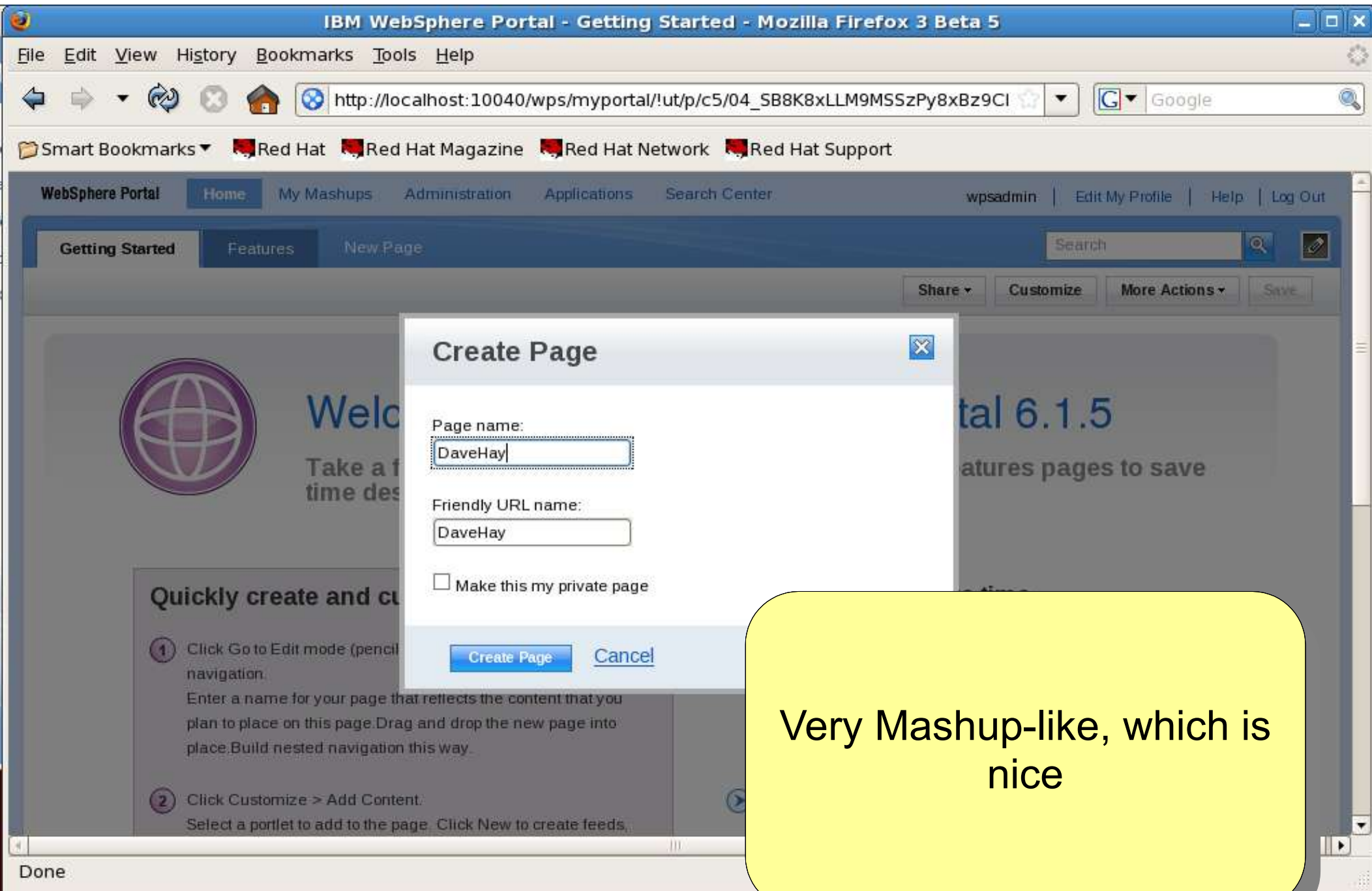


Now THAT is new, and quite shiny – looks similar to Quickr and Connections





Much more user friendly than the previous versions ...



Very Mashup-like, which is nice